

How to connect TMN-51T to Center Manager?
Login Center Manager and connect to TMN-51T using RS232 cable. Read, edit and save settings into TMN-51T.

In this guide, Center Manager (Server) is being installed on a PC. TMN-51T (client) communicates with Center Manager through General packet radio service (GPRS) wirelessly. For this testing, the Server IP used is "119.75.196.177" and port used is "8000".

Note: Please check with the IT administrator for the PC IP address (Server IP Address).

Step 1: Login Center Manager

- Skip this step if login page is disabled.
- Key in the default user name & password as below:
User name: admin, Password : admin
- Login window is shown in Figure 1.



Figure 1: Login Page

Step 2: Center Manager Settings

- Go to Settings→ Center Manager, Center Manager Setting window is shown in Figure 2.

1

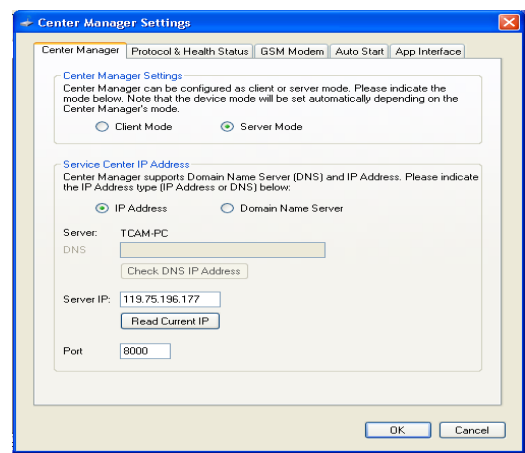


Figure 2: Center Manager Setting Page

- Using "IP Address", key in the Server IP and Port. (Click on "Read Current IP" button to get the current IP address)

Note: This Server IP has to be public (can be accessed by others) use an external computer not within the same network to ping for the IP address.

- Under Protocol & Health Status tab, select "protocol" to be either TCP or UDP.
- Under App Interface tab, select "Virtual Serial Port (VSP)" and do not check "Direct TCP/UDP Connection".

Step 3: Direct Wire Configuration

- Go to Configuration→ Direct Wire Configuration.
- Make sure TMN-51T is connected to the PC and is powered on.
- Select comport used to connected TMN-51T and click the "Connect" button.
- Click the "Read Settings from Device" as seen in Figure 3.

2

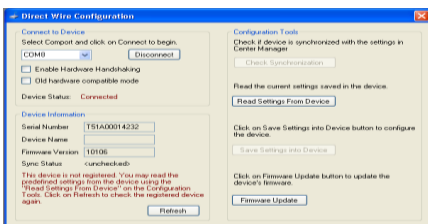


Figure 3: Direct Wire Configuration window

- Key in unique "Device Name" and "Device SIM No". (Device SIM No is the SIM card no. placed inside TMN-51T)

Note: SIM card used will require GPRS function.

- General Settings is shown in Figure 4.

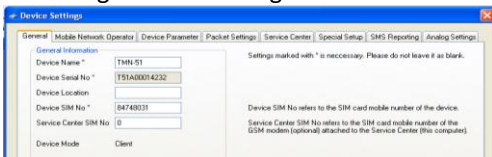


Figure 4: Device Settings: General

- Under Mobile Network Operator tab, key in "GPRS Dial Up Number", "PPP User Name", "PPP Password" and "Access Point Name" for Device's GPRS Settings.

Note: The GPRS Settings depend on the SIM card being used inside TMN-51T. Please contact your local Network Service Provide for more information.

- Under Service Center tab, key in the "Primary Service Center IP Address". **Note: IP address should be the same as the server IP address mention in step 2.**

- Service Center setting is shown in Figure 5.

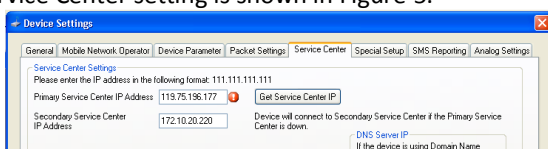


Figure 5: Device Settings: Service Center

3

- Click the "Save" button upon completion of editing setting. **Note: Allows installation to complete on all the pop up command window by choosing the "Install the software automatically".**

- An example of the prompt is shown in Figure 6.



Figure 6: VSP installation prompt

- Click the "Save Settings into Device" button.
- Click the "Refresh" button followed by the "Check Synchronization" to ensure settings are updated.
- Sync Status of Direct Wire Configuration should show "Synchronized".
- Close the Direct Wire Configuration window to exit.

Step 4: Check if device gets connected with Center Manager

- Click on "Start Center Manager" located at the top left hand corner of Center Manager and wait for 1 minute.
- If TMN-51T gets online as seen in Figure 7, you have successfully connect TMN-51T with Center Manager.



Figure 7: Center Manager overview

For more detail information on other configuration, please refer to the Center Manager User Guide.

4